

EPD Transparency Brief

Product name: FREB-7-BLC
Description: Engineered wood flooring, European Oak,
width=189mm, thickness=14mm

Allwood Group, LLC


Declared Product: This Environmental Product Declaration (EPD) covers flooring products produced by Allwood Group, LLC. Declared unit: m2

Declaration Owner: Allwood Group, LLC
PO Box 1788
Tualatin - 97062, OR
www.allwoodgrp.com

Program Operator: P3 Optima
537, McLeod Street
Ottawa, ON - K1R5R2
<https://www.p3optima.com/>

Product Category Rule: Product Category Rule (PCR) Guidance for Building-Related Products and Services, Part B: Flooring EPD Requirements
PCR Program Operator: UL Environment
PCR review was conducted by: Jack Geibig, Chair, Ecoform, jgeibig@ecoform.com – Thaddeus Owen, hiper4m@gmail.com. – Thomas Gloria, PhD, Industrial Ecology Consultants, t.gloria@industrial-ecology.com.

Independent Verifier: This declaration was independently verified in accordance with ISO 14025:2006. The UL Environment “Part A: Calculation Rules for the Life Cycle Assessment and Requirements on the Project Report,” v3.2 (September 2018), based on ISO 21930:2017 and CEN Norm EN 15804 (2012), serves as the core PCR, with additional considerations from the USGBC/UL Environment Part A Enhancement (2017).
Independent verification of the declaration, according to ISO 14025: 2006
Internal ; External X
Third Party Verifier
Geoffrey Guest, Certified 3rd Party Verifier under the P3Optima Program (www.P3Optima.com), CSA Group (www.csaregistries.ca)

Date of Issue: 10 February 2022

Period of Validity: 5 years; valid until 10 February 2027

EPD Number: AG01-001

System boundary

The following figure depicts the cradle-to-grave system boundary considered in this study:

A1 - A3 Product Stage



- A1 Raw material supply
- A2 Transport
- A3 Manufacturing

A4 - A5 Installation Process Stage



- A4 Transport to Site
- A5 Installation Process

B1 - B7 Use Stage



- B1 Use
- B2 Maintenance
- B3 Repair
- B4 Replacement
- B5 Refurbishment
- B6 Operational energy use
- B7 Operational water use

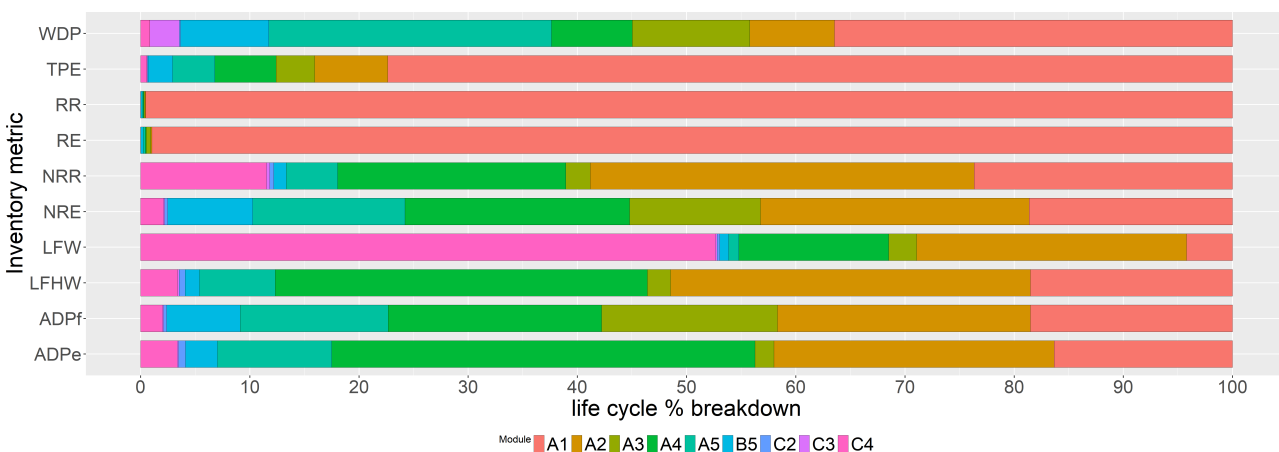
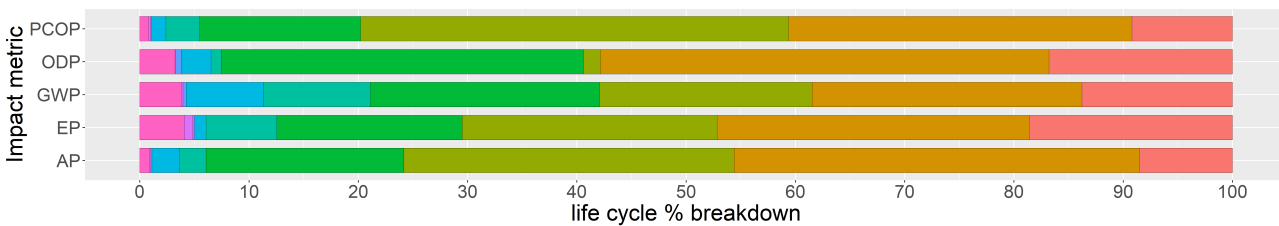
C1 - C4 End of Life Stage



- C1 De-installation/Demolition
- C2 Transport
- C3 Waste processing
- C4 Disposal of waste

Acronym	Life Cycle Impact Metrics	Unit	Value
PCOP	Photochemical oxidation potential	kg O3eq	0.138
ODP	Ozone layer depletion potential	kg CFC-11.	2.25e-06
GWP	Global warming potential	kg CO2-Eq	18.3
EP	Eutrophication potential	kg N	0.0114
AP	Acidification potential	kg SO2eq	0.279

Acronym	Life Cycle Inventory Metrics	Unit	Value
WDP	Water depletion potential	m3 water-	0.092
TPE	Total primary energy	MJ-Eq	1080
RR	Renewable resources	m3	0.0376
RE	Renewable energy	MJ-Eq	778
NRR	Non-renewable resources	kg	12.4
NRE	Non-renewable energy	MJ-Eq	293
LFW	Landfill bulk waste	kg waste	13.6
LFHW	Landfill hazardous waste	kg waste	0.000406
ADPe	Abiotic depletion-fossil fuel	kg Sbeq	0.000594
ADPf	Abiotic depletion-elements	kg Sbeq	0.142



Module A1 A2 A3 A4 A5 B5 C2 C3 C4

