

EPD Transparency Brief

Product name: FRE-114-3-5-AW
Description: Engineered wood flooring, American Walnut,
width=127mm, thickness=14mm

Allwood Group, LLC


Declared Product: This Environmental Product Declaration (EPD) covers flooring products produced by Allwood Group, LLC. Declared unit: m2

Declaration Owner: Allwood Group, LLC
PO Box 1788
Tualatin - 97062, OR
www.allwoodgrp.com

Program Operator: P3 Optima
537, McLeod Street
Ottawa, ON - K1R5R2
<https://www.p3optima.com/>

Product Category Rule: Product Category Rule (PCR) Guidance for Building-Related Products and Services, Part B: Flooring EPD Requirements
PCR Program Operator: UL Environment
PCR review was conducted by: Jack Geibig, Chair, Ecoform, jgeibig@ecoform.com – Thaddeus Owen, hiper4m@gmail.com. – Thomas Gloria, PhD, Industrial Ecology Consultants, t.gloria@industrial-ecology.com.

Independent Verifier: This declaration was independently verified in accordance with ISO 14025:2006. The UL Environment “Part A: Calculation Rules for the Life Cycle Assessment and Requirements on the Project Report,” v3.2 (September 2018), based on ISO 21930:2017 and CEN Norm EN 15804 (2012), serves as the core PCR, with additional considerations from the USGBC/UL Environment Part A Enhancement (2017).
Independent verification of the declaration, according to ISO 14025: 2006
Internal ; External X
Third Party Verifier
Geoffrey Guest, Certified 3rd Party Verifier under the P3Optima Program (www.P3Optima.com), CSA Group (www.csaregistries.ca)

Date of Issue: 10 February 2022

Period of Validity: 5 years; valid until 10 February 2027

EPD Number: AG01-001

System boundary

The following figure depicts the cradle-to-grave system boundary considered in this study:

A1 - A3 Product Stage



A1 Raw material supply
A2 Transport
A3 Manufacturing

A4 - A5 Installation Process Stage



A4 Transport to Site
A5 Installation Process

B1 - B7 Use Stage



B1 Use
B2 Maintenance
B3 Repair
B4 Replacement
B5 Refurbishment
B6 Operational energy use
B7 Operational water use

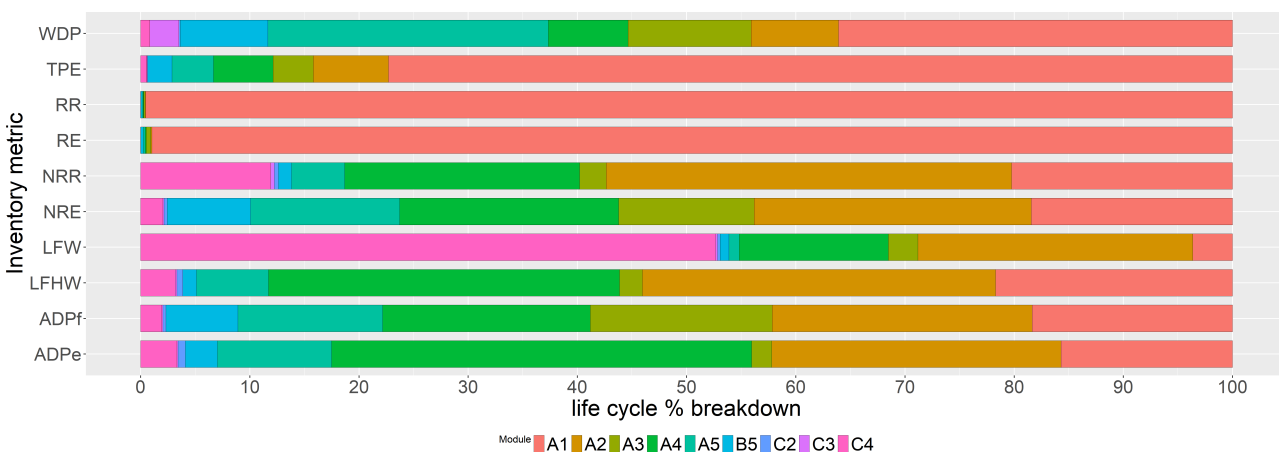
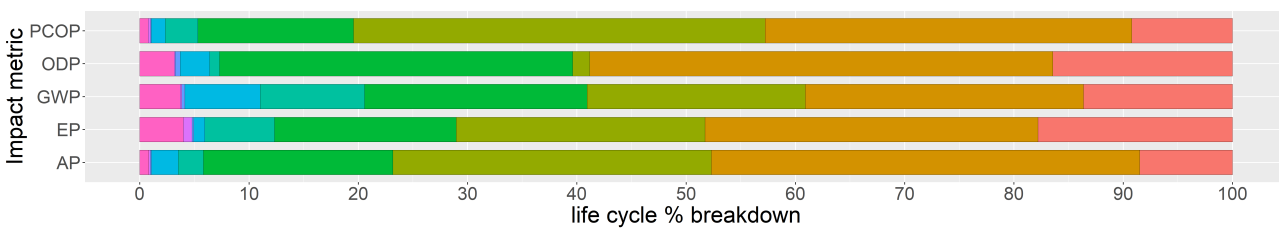
C1 - C4 End of Life Stage



C1 De-installation/Demolition
C2 Transport
C3 Waste processing
C4 Disposal of waste

Acronym	Life Cycle Impact Metrics	Unit	Value
PCOP	Photochemical oxidation potential	kg O3eq	0.14
ODP	Ozone layer depletion potential	kg CFC-11.	2.26e-06
GWP	Global warming potential	kg CO2-Eq	18.4
EP	Eutrophication potential	kg N	0.0114
AP	Acidification potential	kg SO2eq	0.285

Acronym	Life Cycle Inventory Metrics	Unit	Value
WDP	Water depletion potential	m3 water-.	0.0912
TPE	Total primary energy	MJ-Eq	1080
RR	Renewable resources	m3	0.038
RE	Renewable energy	MJ-Eq	780
NRR	Non-renewable resources	kg	11.7
NRE	Non-renewable energy	MJ-Eq	293
LFW	Landfill bulk waste	kg waste	13.4
LFHW	Landfill hazardous waste	kg waste	0.000422
ADPe	Abiotic depletion-fossil fuel	kg Sbeq	0.000584
ADPf	Abiotic depletion-elements	kg Sbeq	0.142



Module A1 A2 A3 A4 A5 B1 B2 B3 B4 B5 B6 B7 C1 C2 C3 C4

